

A large, illuminated sign for Southern Bible Institute & College. The sign features the words "SOUTHERN BIBLE" in large, white, 3D block letters on a dark brown base. Below this, the words "INSTITUTE & COLLEGE" are written in smaller, white, serif capital letters on a lighter brown base. The sign is set against a backdrop of trees and a cloudy sky. In the foreground, there is a brick wall and some greenery.

# SOUTHERN BIBLE

INSTITUTE & COLLEGE

**Donor Support**  
Packet | FY2024 - FY2028



# Message from Our President

These are exciting times for Southern Bible Institute & College! As a fully accredited college, SBIC's impact is at a peak in its nearly 100 years of existence. While staying true to our commitment to quality biblical higher education, SBIC has expanded its reach to encompass younger demographics, specifically individuals aged 18-25. Our mission-aligned curriculum has expanded beyond Ministry and Biblical/Theological studies to offer a minor in Health Sciences and soon, degrees in Education. This positions SBIC to equip students with a faith-infused education to serve the mind, body, and soul. To achieve our fullest potential, we are relying on God-sent partners, supporters, and friends. I invite you to prayerfully consider how you can join us in our mission. Thank you for exploring our funding efforts and opportunities outlined in this packet. We'd be honored to have your gracious support.



Terrance A. Ford, PhD  
*President*

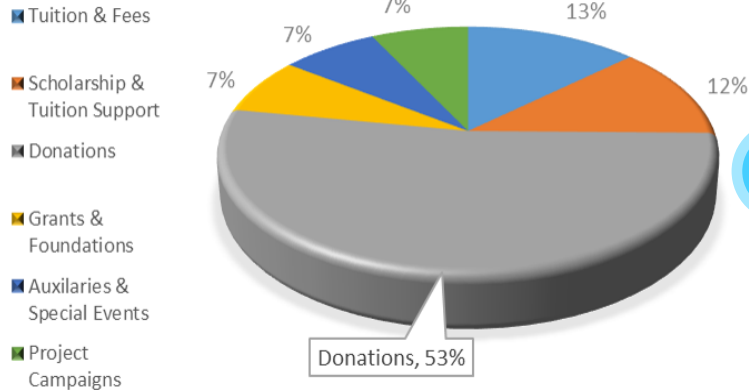


# Annual Fund

## Budget Projections

The Annual Fund sustains our operational and advancement expenses each fiscal year. Operating at an accredited level demands a steady cash flow, diverse revenue sources, ample reserves, and provisions for expansion. Our projected budgets for the next five years will require approximately \$7.6 million in accumulated income.

### REVENUE STREAMS %



Our continued growth relies heavily on the generous contributions from dedicated friends and supporters.

2027 | SBIC Celebrates its Centennial

2028 | SBIC Accreditation Reaffirmation

FY2024

FY2025

FY2026

FY2027

FY2028

\$1,357,667

\$1,425,550

\$1,511,083

\$1,616,858

\$1,697,701

# Multi-Year Annual Fund Support

One of the most impactful ways to support SBIC's mission is through multi-year pledged gifts. These commitments provide stability to the annual fund budgets, alleviate repeated requests for support, and can fund special projects, programs, or events. Given the five-year budget projections and significant reliance on donor gifts, multi-year pledges are essential to empowering the advancement of our vital mission.





# Highlighted Funding Opportunities

Whether funds are provided as part of a multi-year pledge or given as an independent gift, they play a vital role in advancing our mission. The following highlighted areas offer a preview of where and how funds will support SBIC's Strategic Plan for Growth & Improvement over the next five years.



Our Board of Directors and Advisory Council eagerly invite mission-aligned partners to join us in our endeavor to offer quality biblical higher education.





# Event Sponsorship & Matching Gifts

## Key Funding Opportunities:

- North Texas Giving Day (*Matching*)
- MEH Legacy Event (*Sponsorship*)
- Connecting Christ & Culture Conference (*Sponsorship*)
- Academic Year-End Celebration Events (*Sponsorship*)



Yearly events such as these serve to introduce the College to new audiences, offer opportunities for yearly giving, and foster lasting relationships with supporters.



# Endowment Fund Gifts

## Key Funding Opportunities:

- Planned Gift

## MARTIN E. HAWKINS LEGACY FUND WALK

Come to the SBIC campus or join Dr. Hawkins as he walks a 2K on Facebook **LIVE**



# Educational Programs & Projects

## Key Funding Opportunities:

- Daniel Scholars Program
- Milestone Degree Program
- Church Leadership Program
- Digital Studies Program
- Archive & Digital Preservation Project

# Distant Education & Technology Projects

## Key Funding Opportunities:

- Classroom Technology Upgrades
- Auditorium & Virtual Chapel Enhancements
- Preaching & Podcast Labs

These programs and projects strategically extends SBIC's impact well beyond the Dallas/Fort Worth area.





# Security Projects

## Key Funding Opportunities:

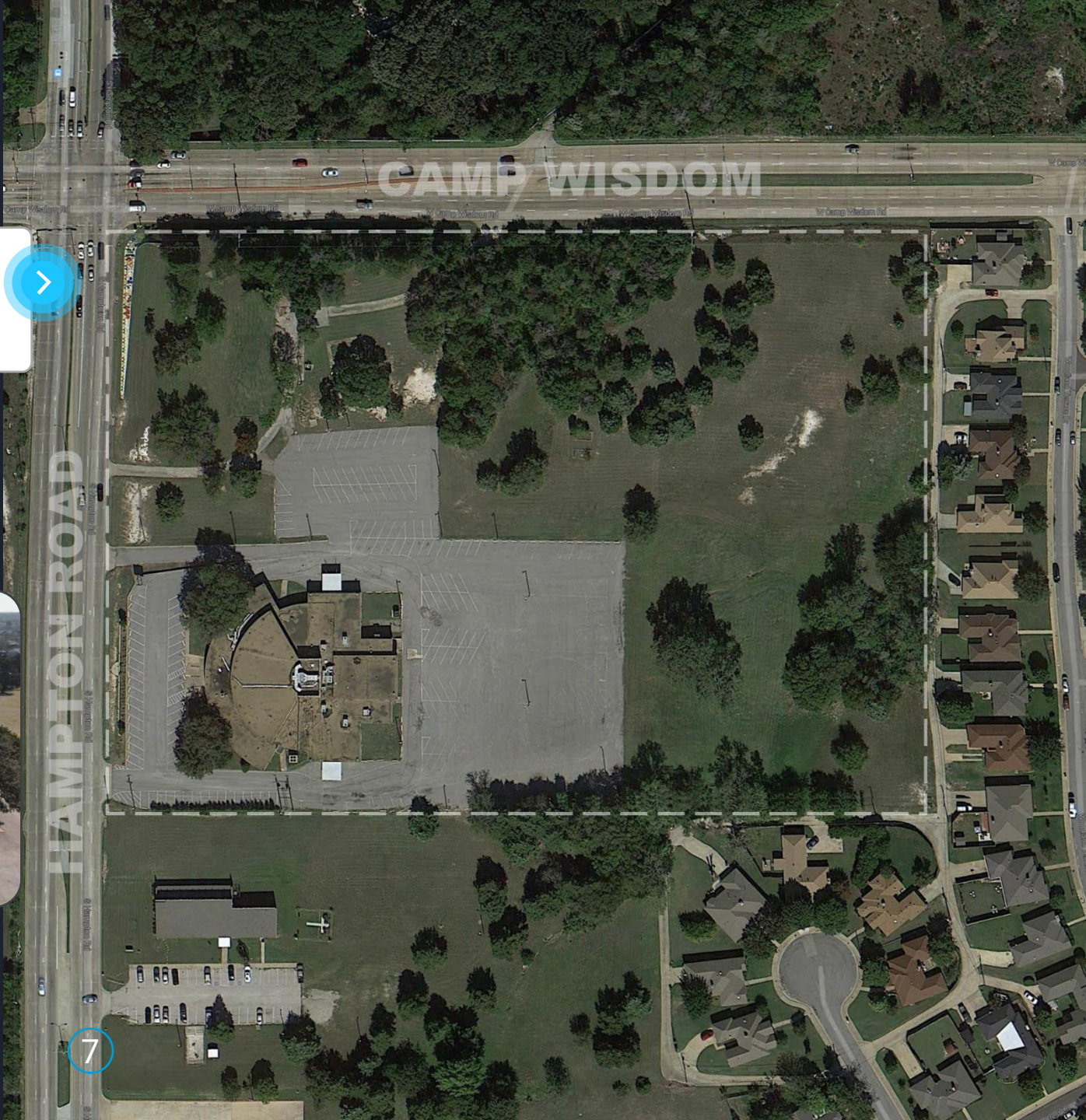
- Campus perimeter enclosure
- Upgraded campus lighting & signage
- Campus keyless entry system
- Visitor management check-in system

SBIC is situated on 12 beautiful acres at a prime intersection in southern Dallas, Texas.

# Campus Improvement Projects

## Key Funding Opportunities:

- A/C replacements
- Parking lot re-pavement
- Upgraded landscaping





# Campus Development Plan

## Key Funding Opportunities:

- Campus Master Plan Development
- Centennial Capital Campaign

President Ford's visionary campus site plan entails phased expansions of academic and student facilities, outdoor community spaces, and revenue-generating ventures such as retail dining and short-term lodging.



# Ways to Financially Support SBIC

## STONE Pledge

Designated or  
undesigned pledged  
gift(s) totaling  
\$250,000 or more paid  
between 1-5 years  
...  
Individually or  
as a Group



## MAJOR GIFT

Designated or  
undesigned gift(s)  
\$5,000 and up.  
...  
Significantly supports the  
annual fund or specified  
funding need



## MEANINGFUL GIFT

Gift less than \$5,000  
...  
Supports the annual fund





# Thank You

## What's Next? Let's Meet...

We sincerely appreciate your taking the time to explore ways to support Southern Bible Institute & College. It would be our delight to arrange either a campus visit, an in-person meeting, or a video/phone call at your convenience. We eagerly anticipate discussing with you the details of our overall vision for the future or any particular area of interest you may have.

To schedule further discussion, email us at:  
[presidentsoffice@southernbible.edu](mailto:presidentsoffice@southernbible.edu)

